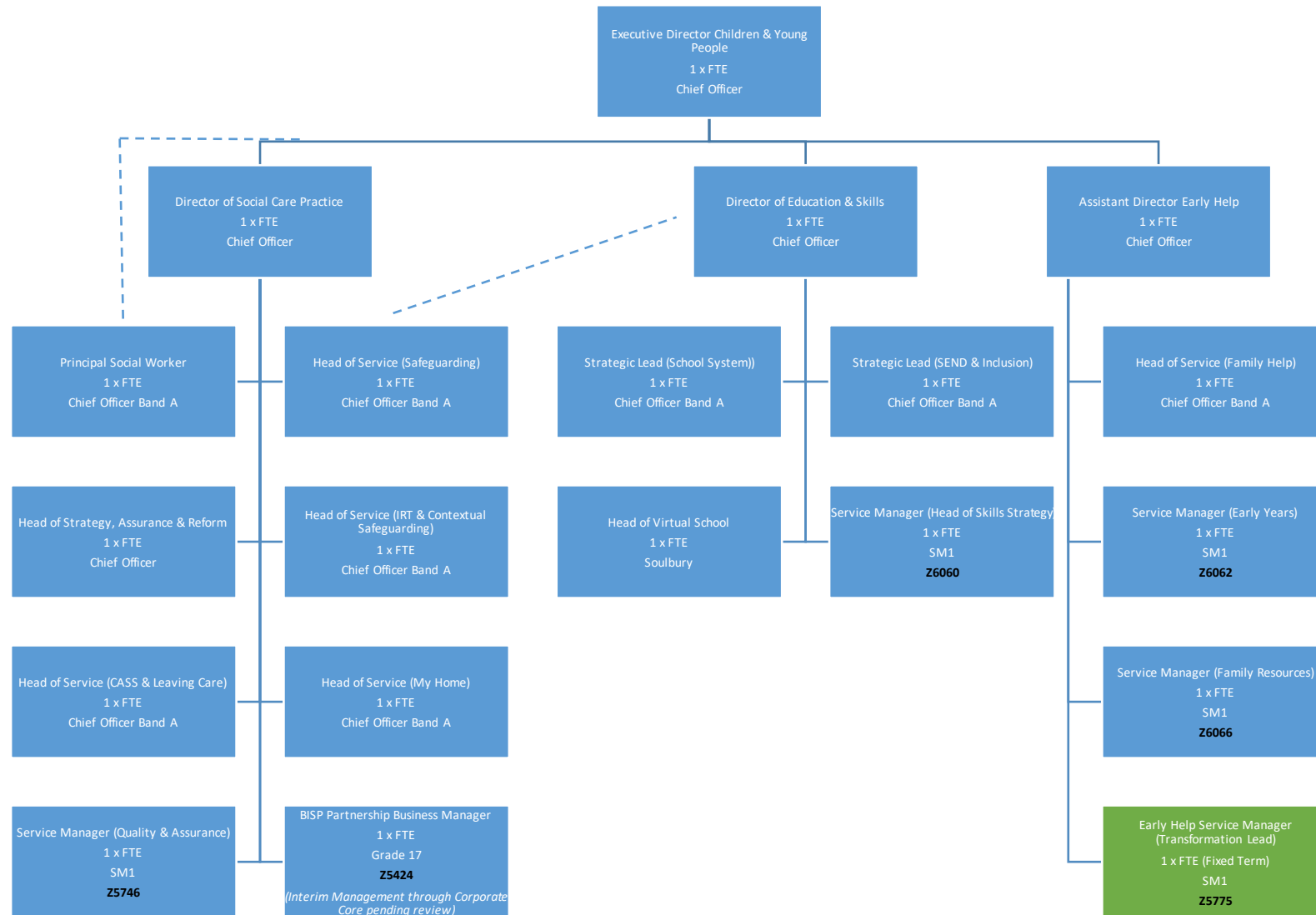


**Children & Young People Directorate 2023**

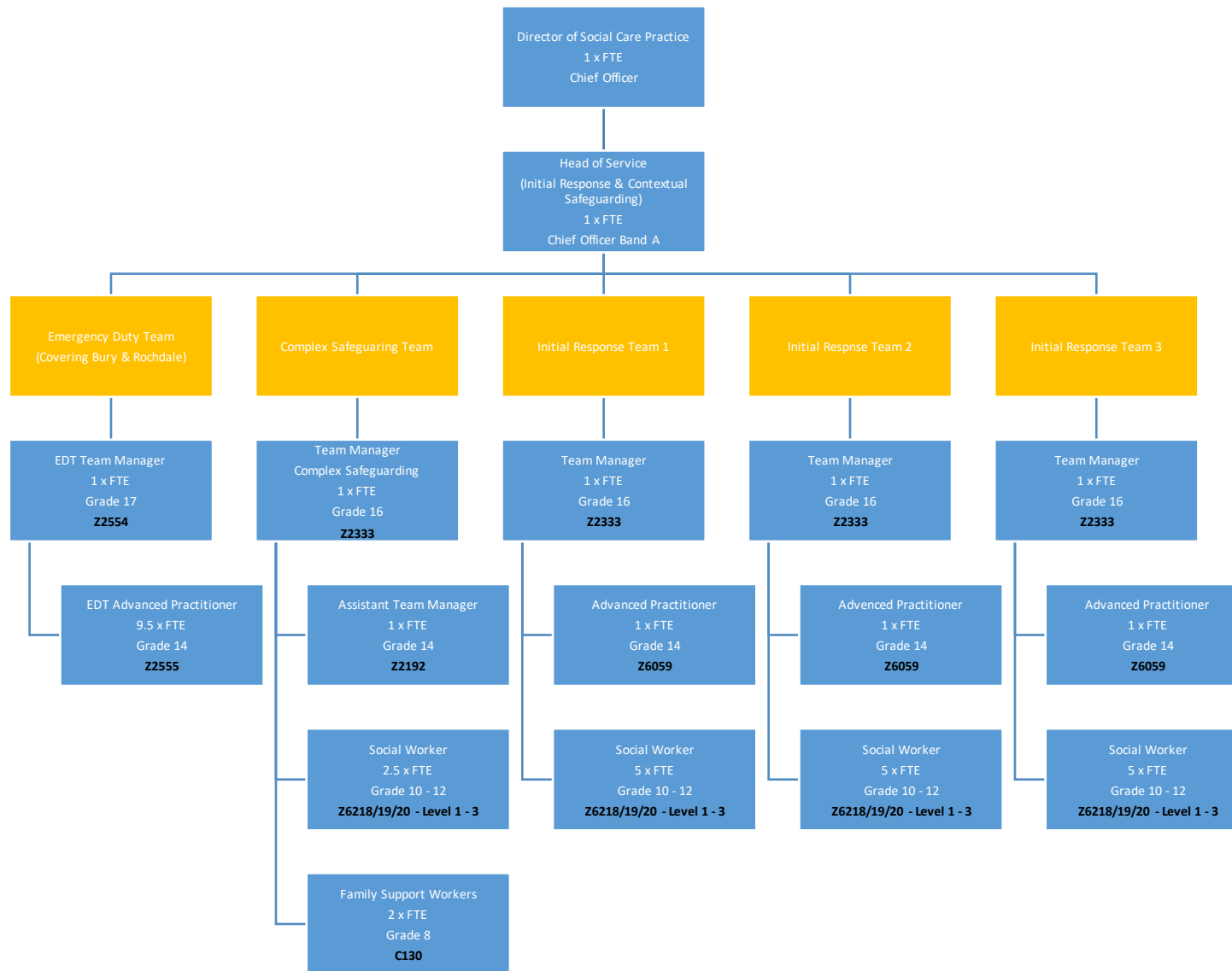
**Current Structures**

# Children & Young People Directorate Structure Charts

## Children & Young People Senior Management

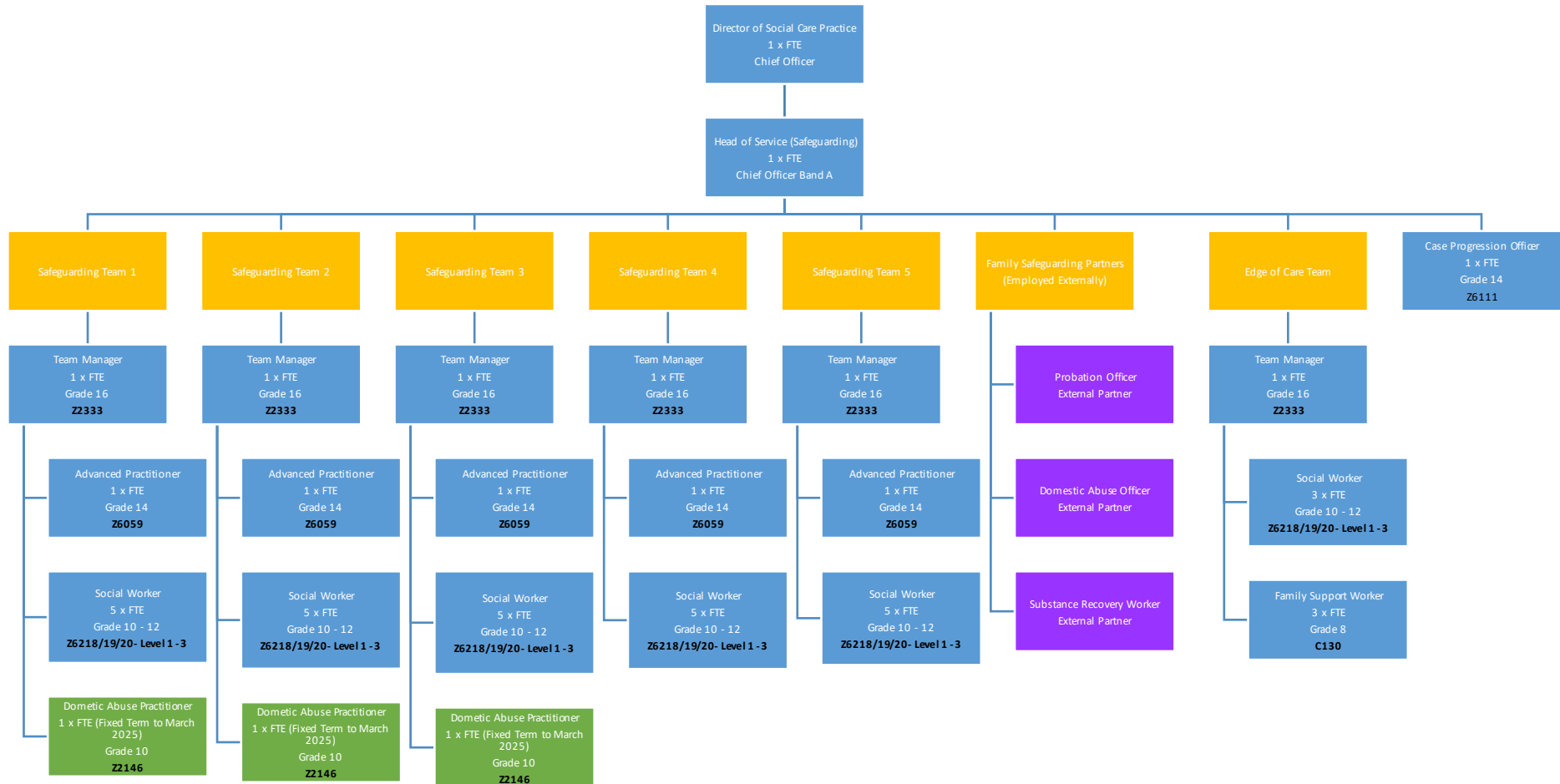


**Social Care & Safeguarding: Initial Response & Contextual Safeguarding**



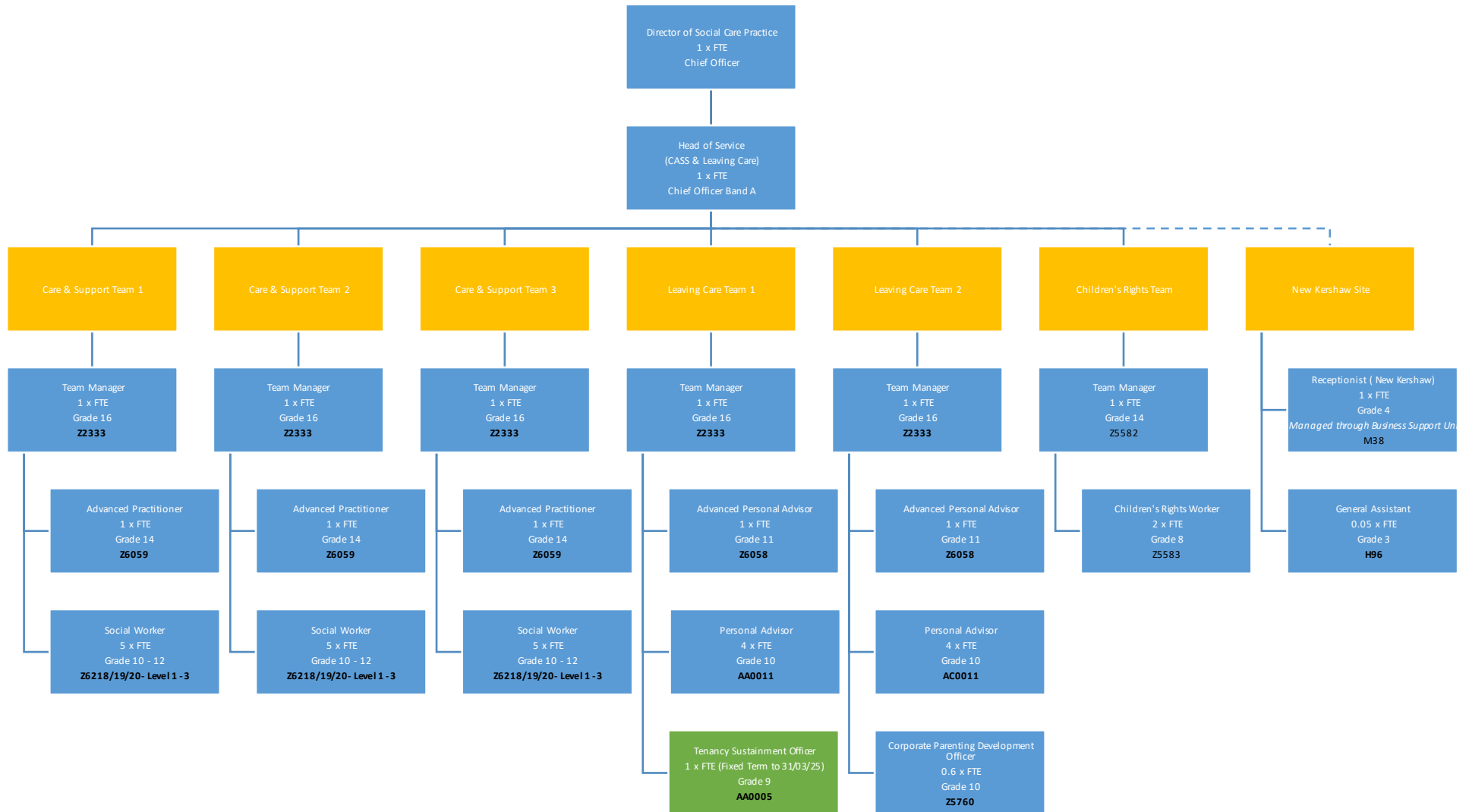
# Children & Young People Directorate Structure Charts

## Social Care & Safeguarding: Safeguarding Service



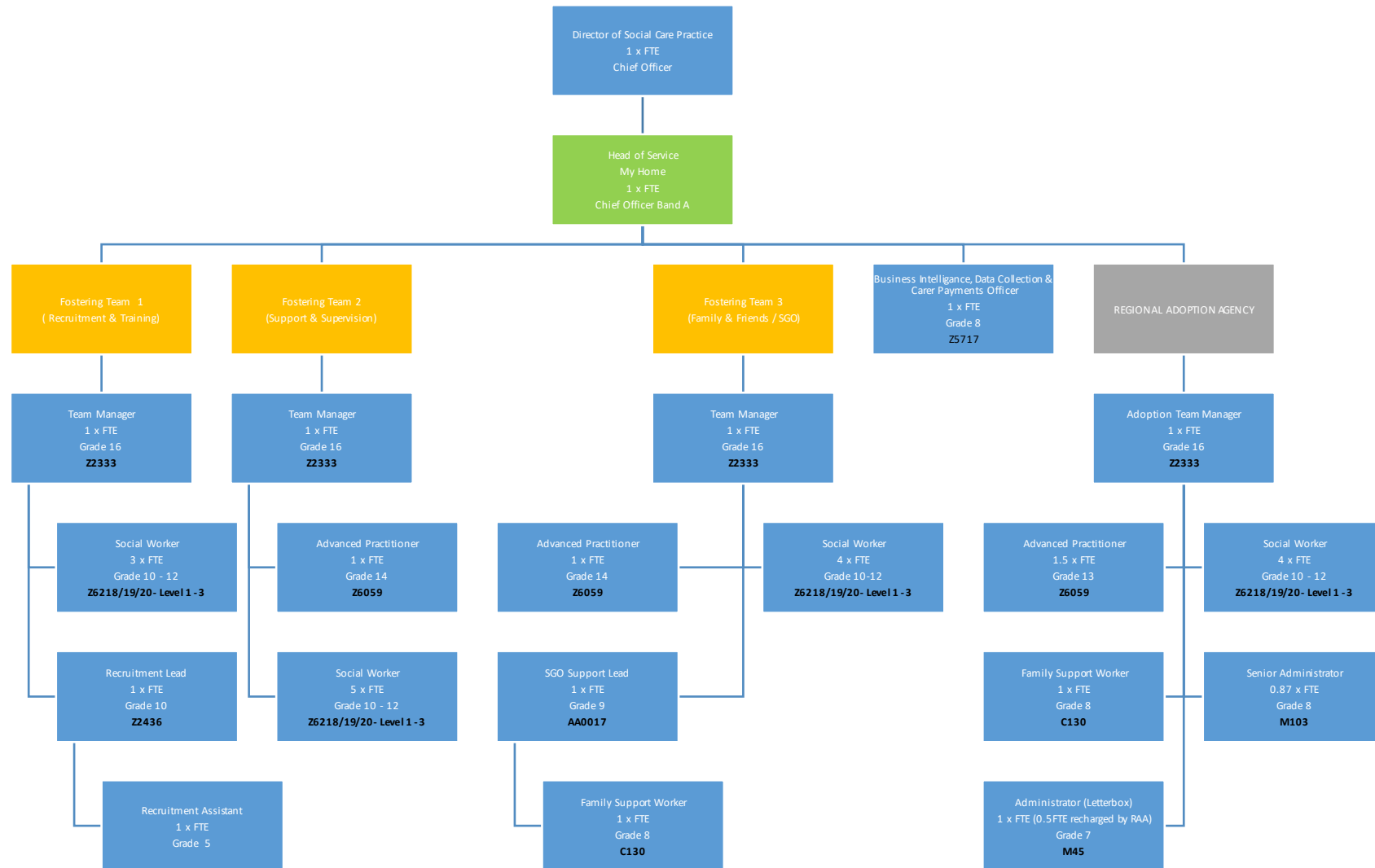
# Children & Young People Directorate Structure Charts

## Social Care & Safeguarding: CASS & Leaving Care

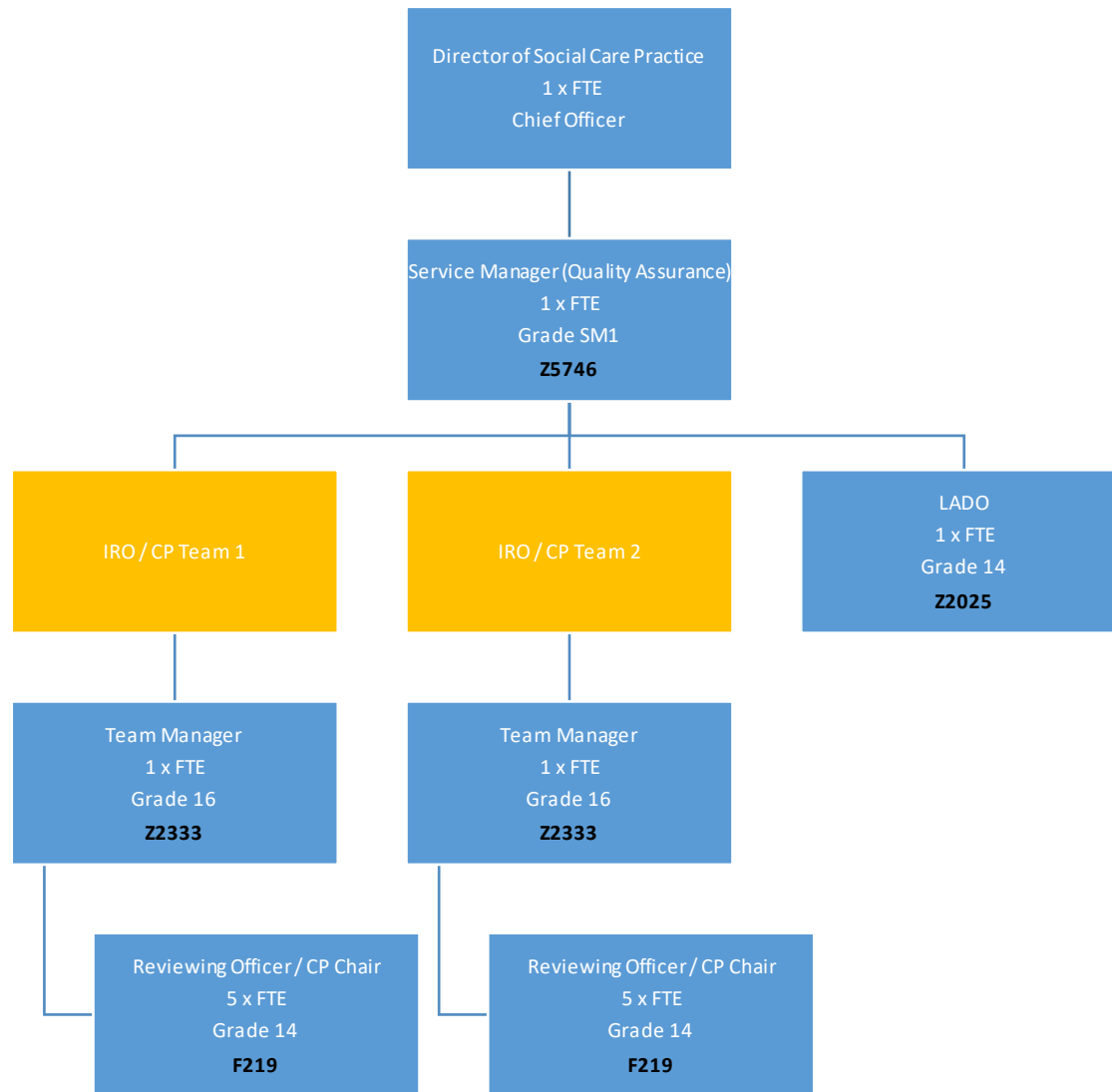


# Children & Young People Directorate Structure Charts

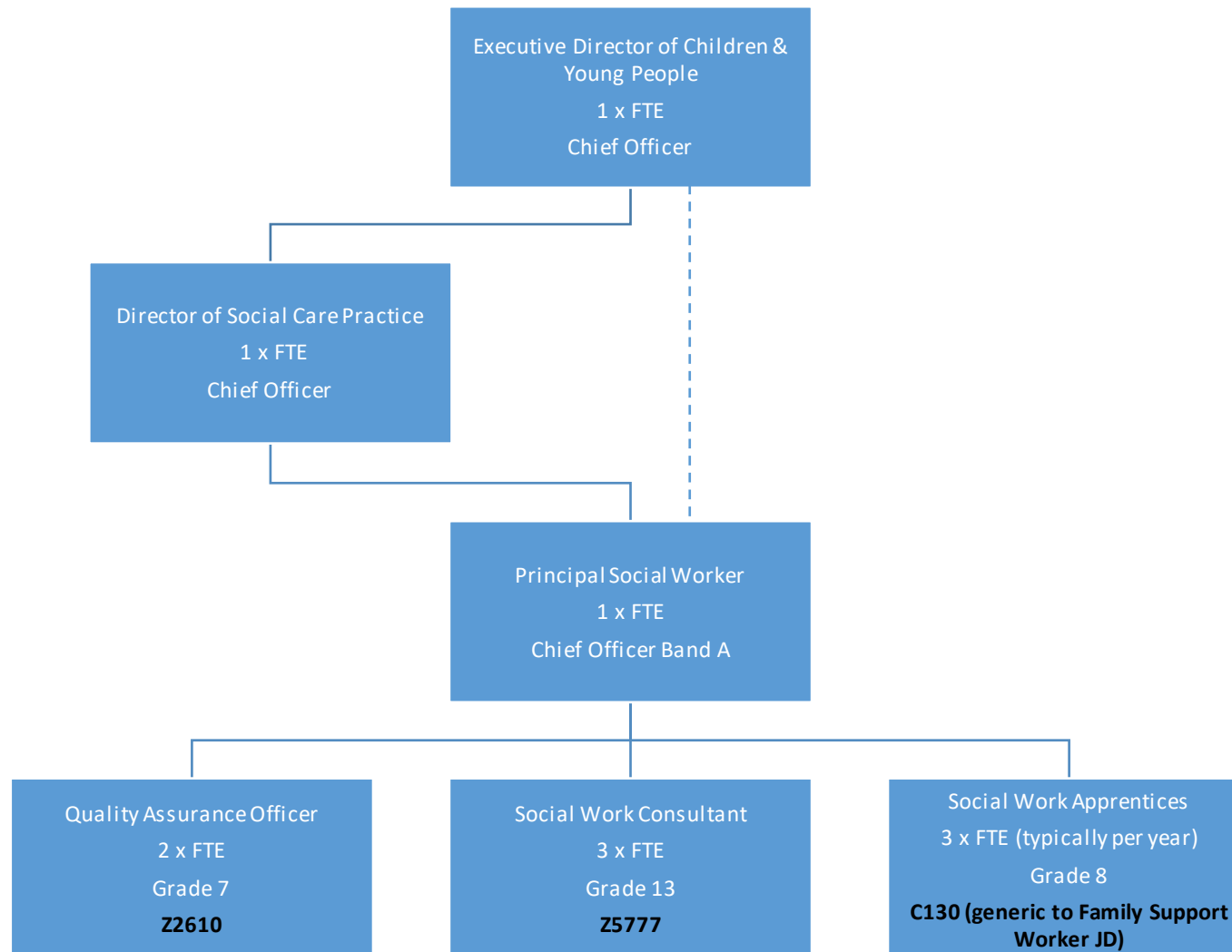
## Social Care & Safeguarding: My Home



**Social Care & Safeguarding: Quality & Assurance**



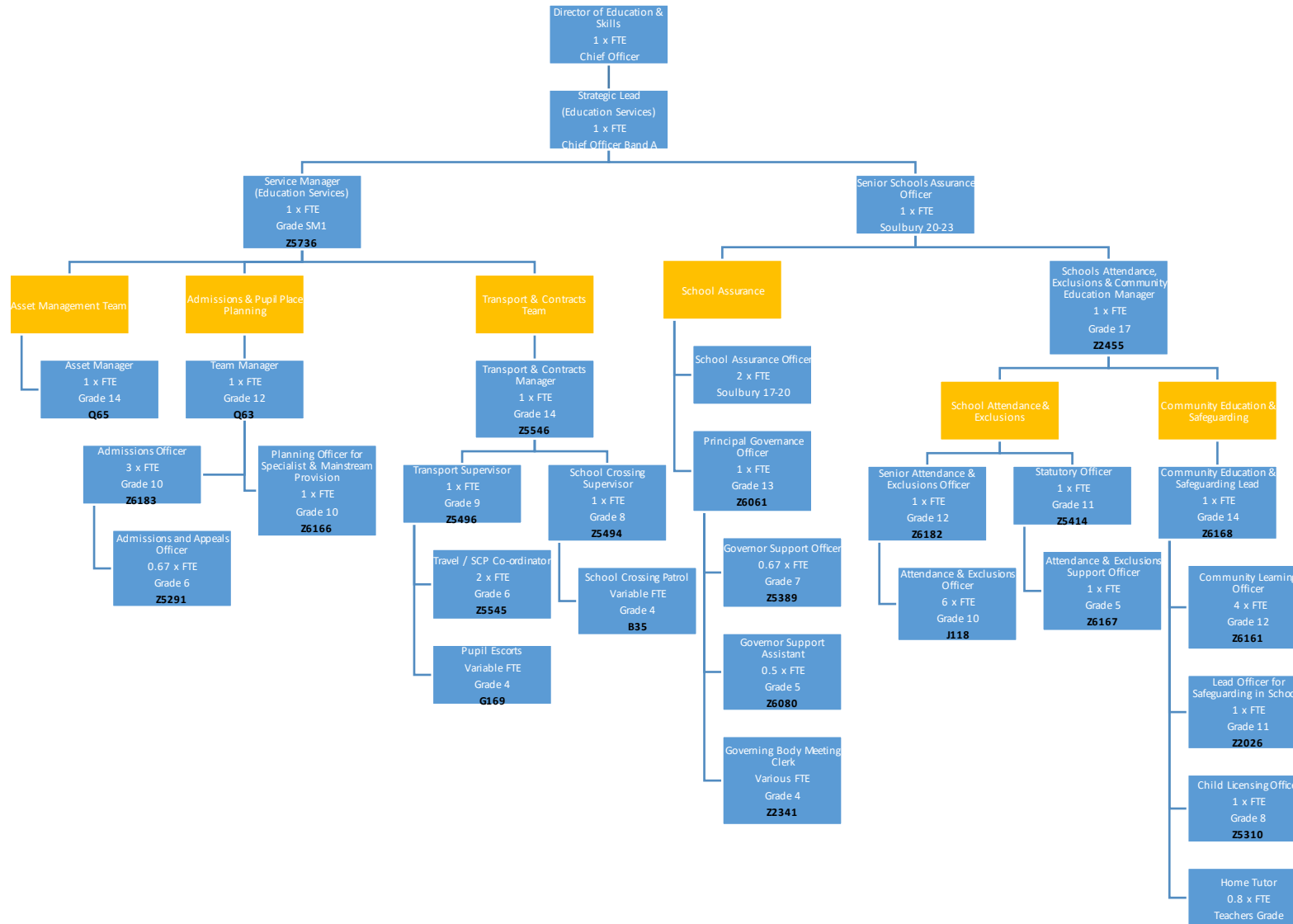
**Social Care & Safeguarding: Social Work Development**





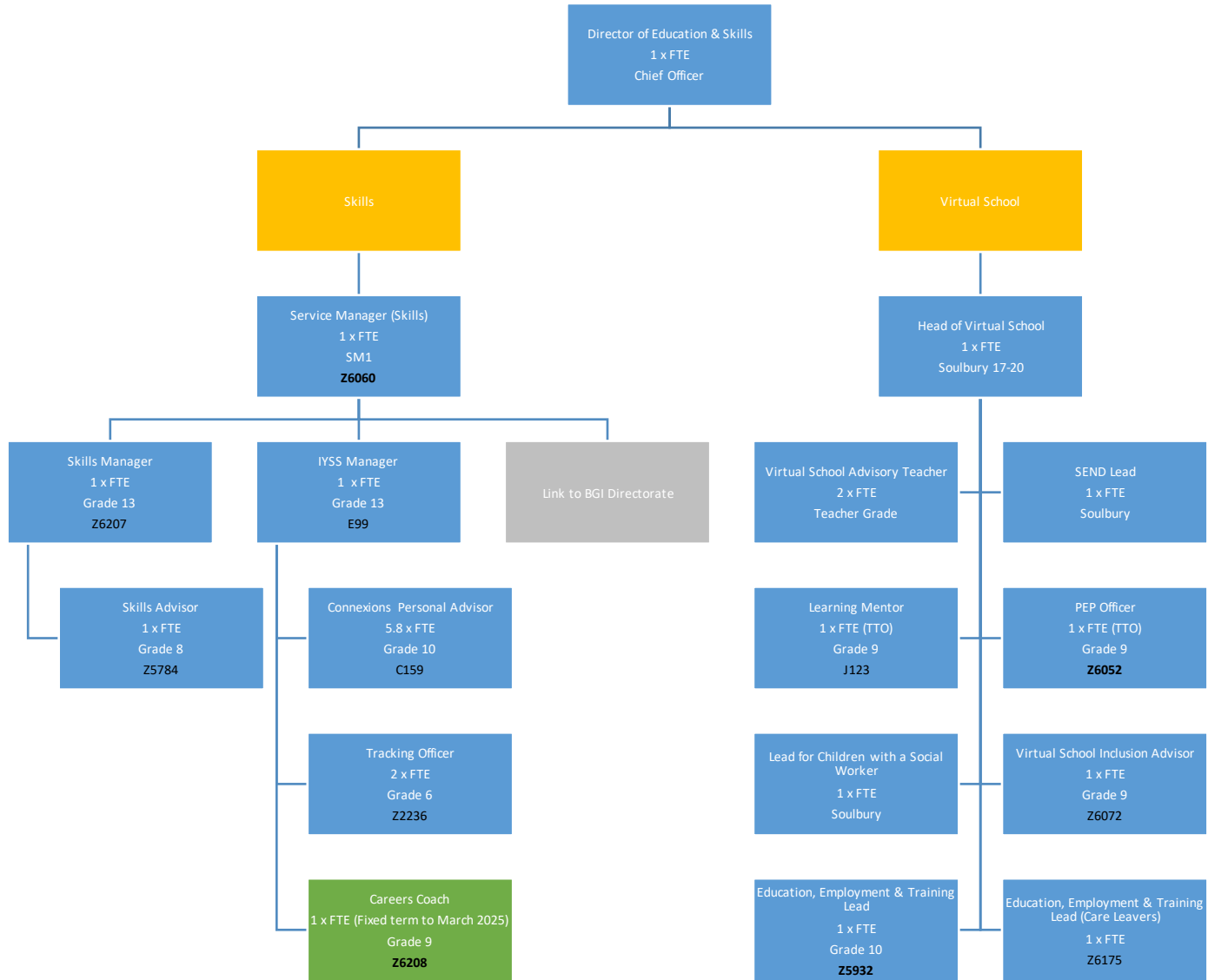
# Children & Young People Directorate Structure Charts

## Education & Skills: Education Services



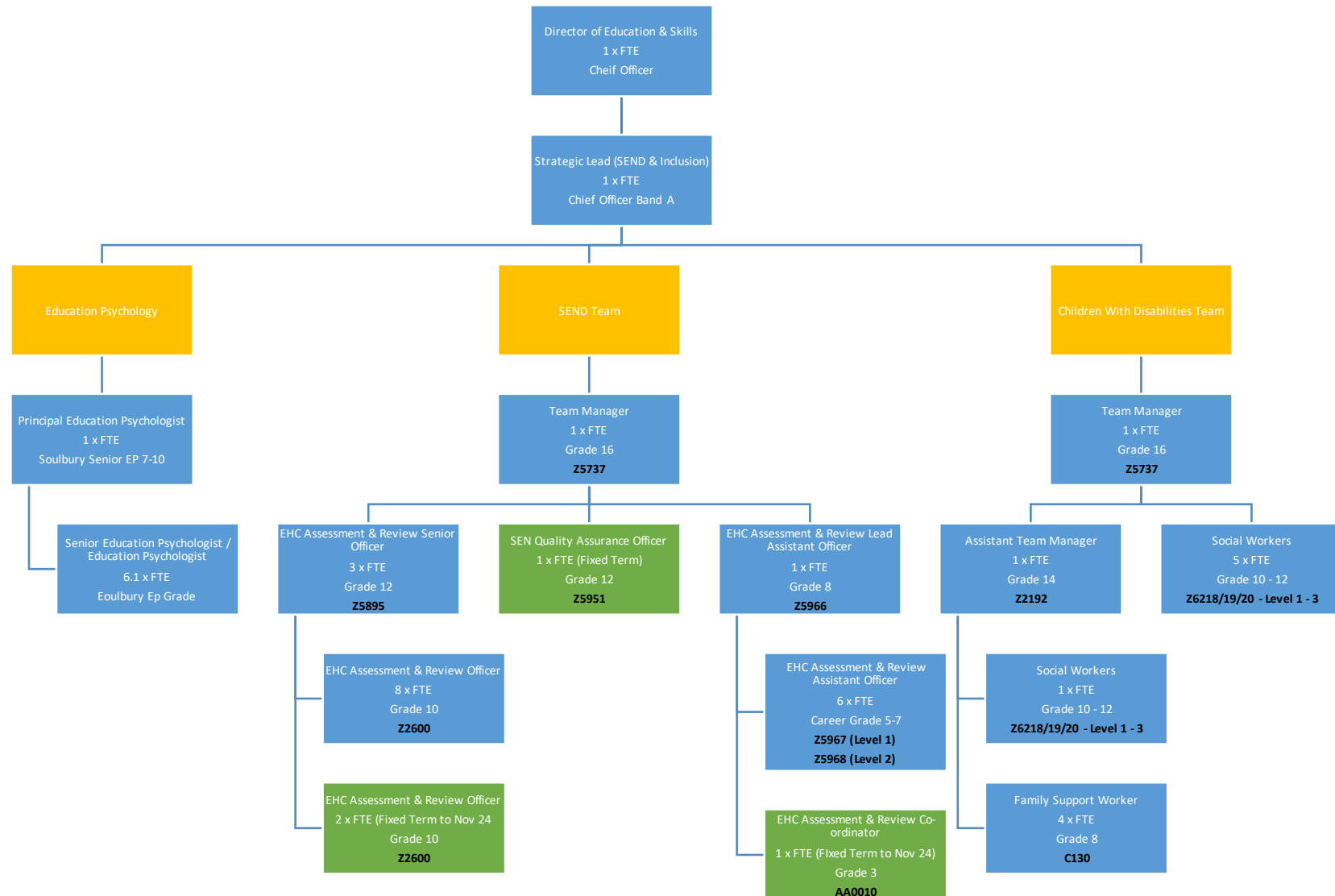
Children & Young People Directorate Structure Charts

**Education & Skills: Quality Standards, Skills & Virtual School**



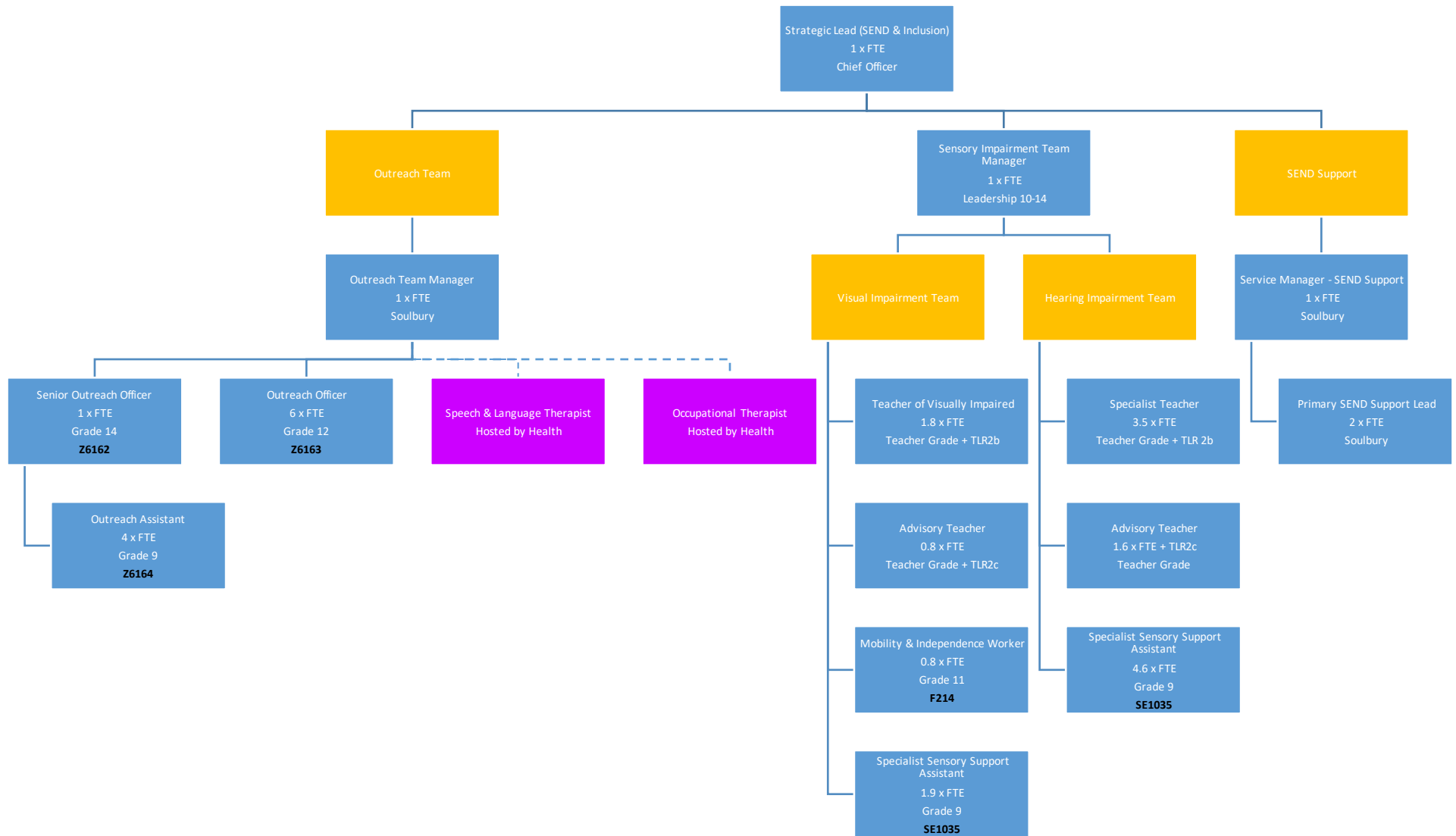
# Children & Young People Directorate Structure Charts

## Education & Skills: Special Educational Needs

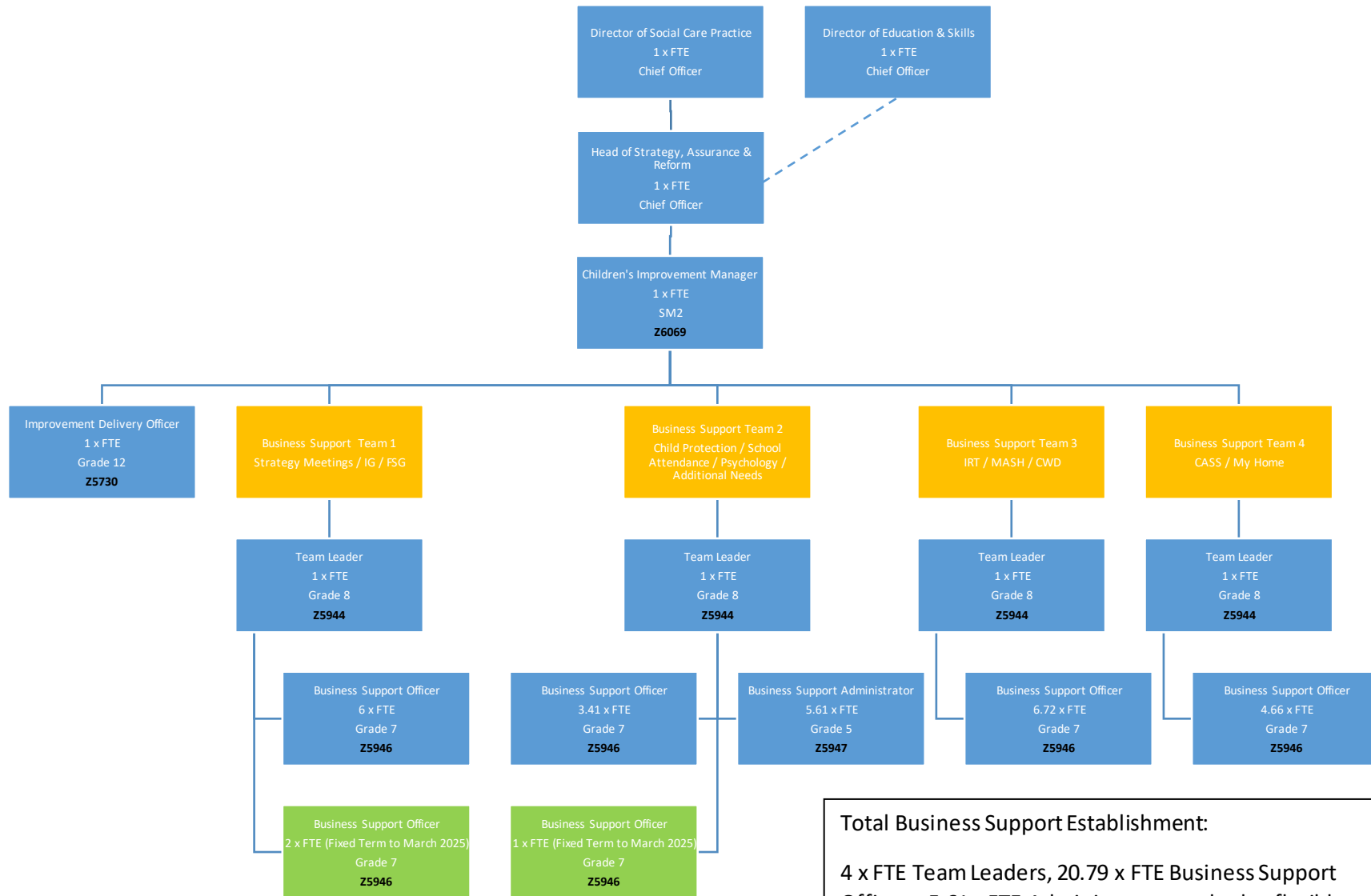


Children & Young People Directorate Structure Charts

**Education & Skills: Inclusion & Disadvantaged Children**



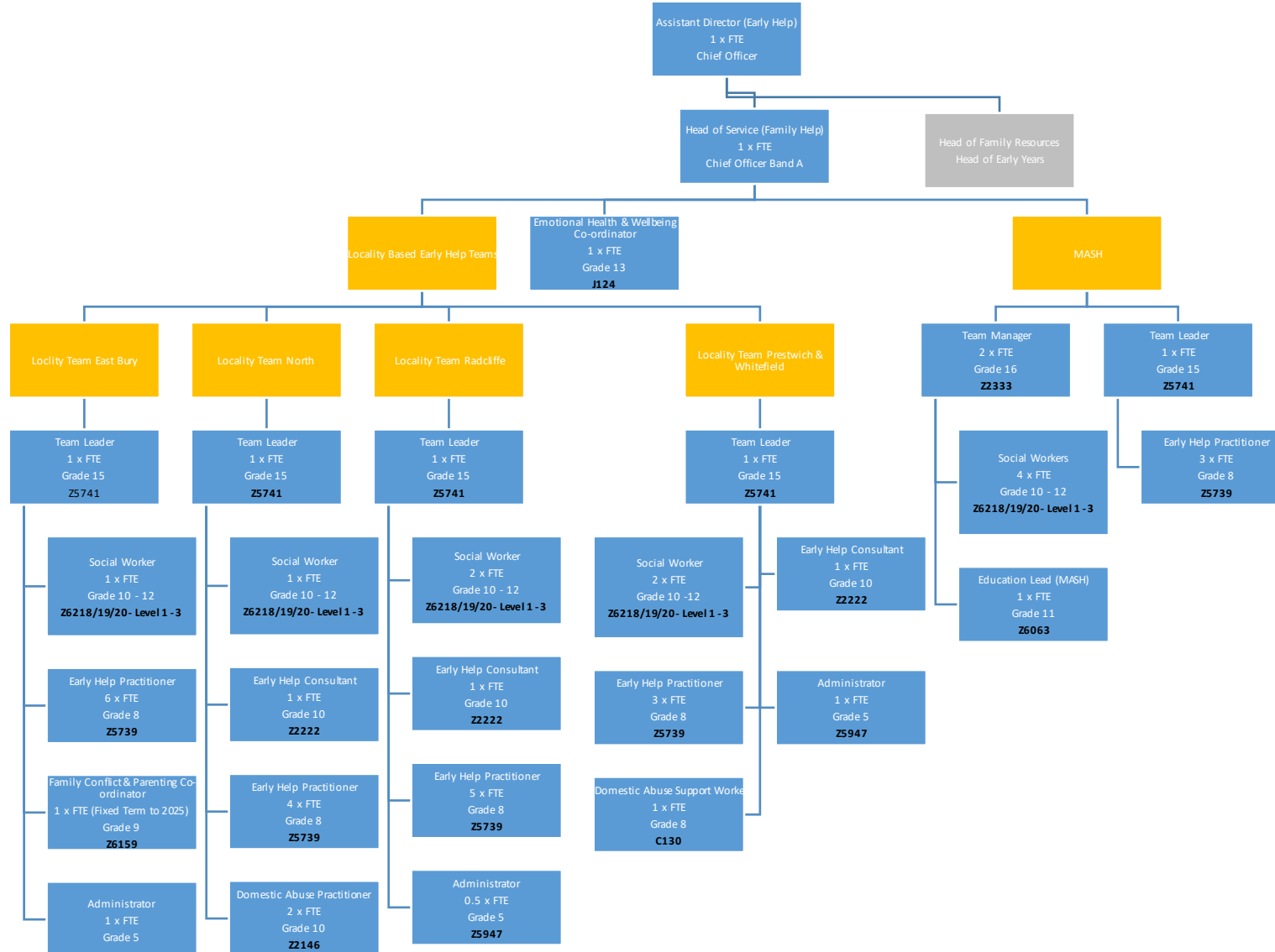
**Strategy & Improvement**



**Total Business Support Establishment:**  
 4 x FTE Team Leaders, 20.79 x FTE Business Support Officers, 5.61 x FTE Administrators to deploy flexibly across teams

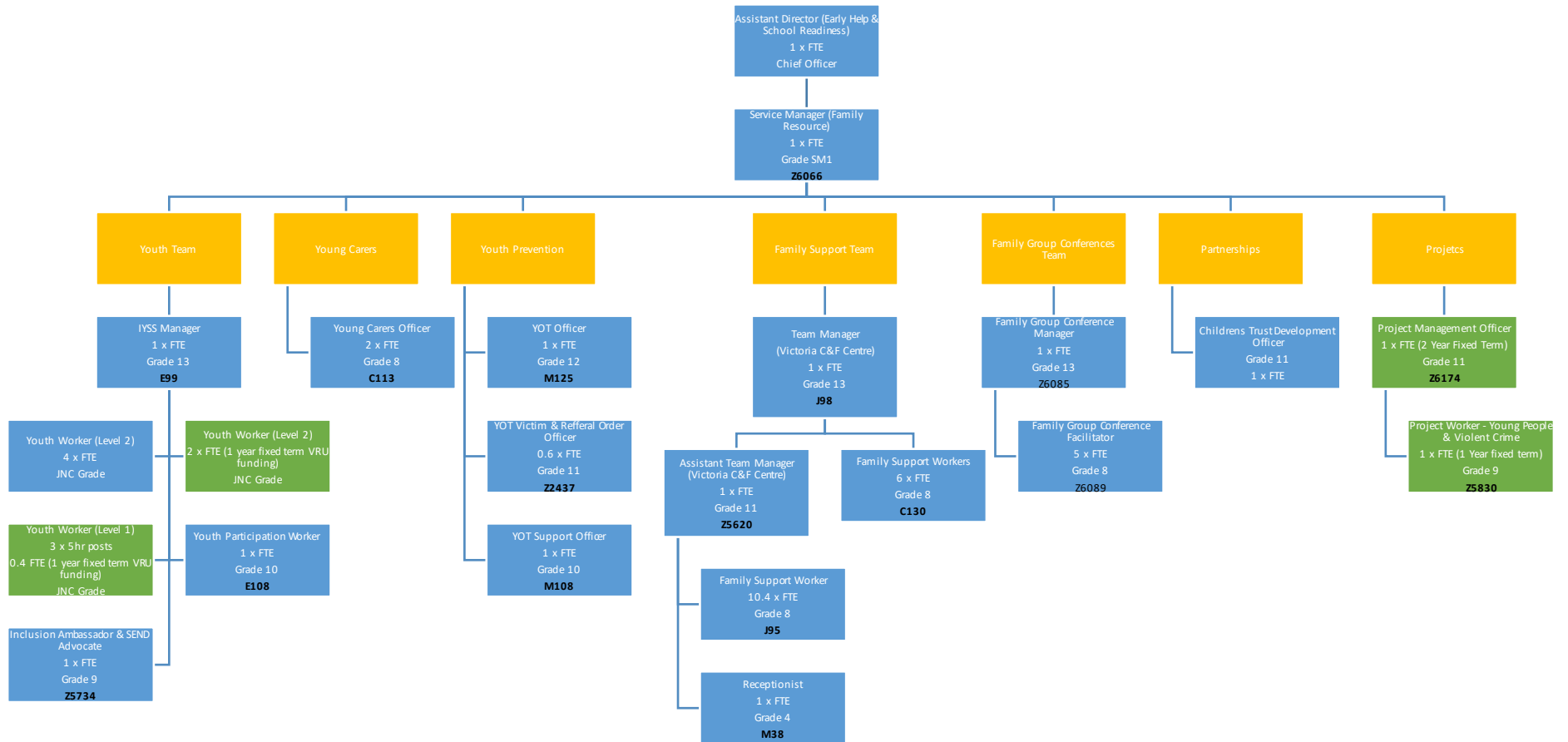
# Children & Young People Directorate Structure Charts

## Early Help (Family Help)



# Children & Young People Directorate Structure Charts

## Early Help (Family Resource)



# Children & Young People Directorate Structure Charts

## Early Help (Early Years)

